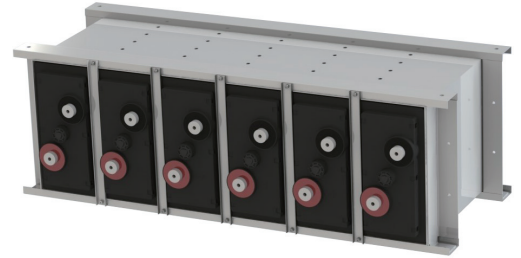


# GFM-FB Series

## GFM-1000FB 2V1000Ah

GFM-FB series batteries introduction of Japan's Furukawa battery advanced floating charge standby battery technology, long life design, design floating life of 15 years. It is suitable for applications of Telecom room, IDC room, Electrical DC back-up power, Petroleum and petrochemical, financial systems and other high-end standby areas.



### Benefits

- Very long life according to EUROBAT Classification
- Advanced manufacturing technology and automation equipment to ensure battery consistency
- Special structural design and technical routing to ensure battery reliability
- Modular design for different capacity combinations
- Horizontal installation, easy installation and maintenance

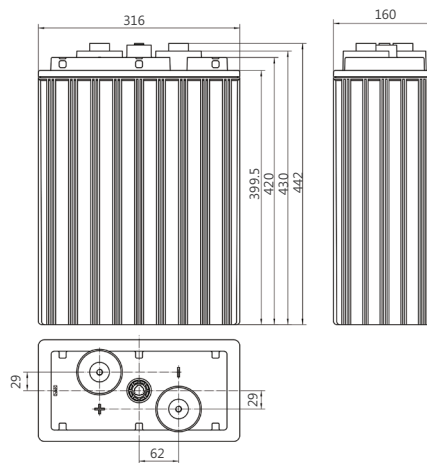
### Applications

- Telecommunications
- Power system
- UPS
- Electrical DC back-up power
- Data center

### Standards

- IEC 60896-21/22
- DL/T 637-1997
- EUROBAT guide

### Drawing



### Specifications

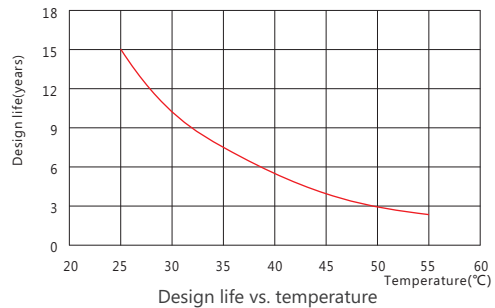
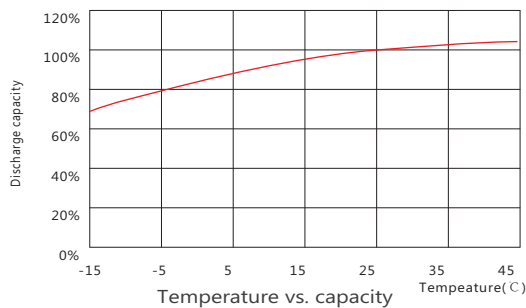
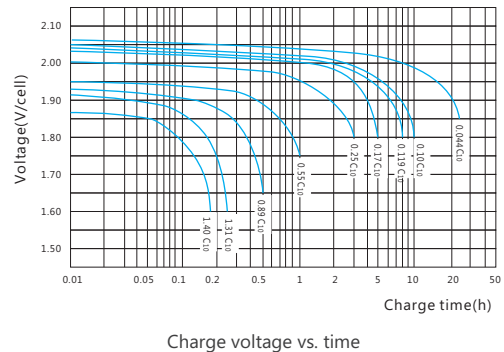
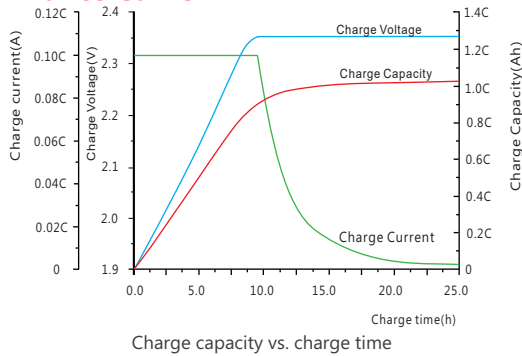
Battery Model	GFM-1000FB			
Design Life (years, 25°C)	15			
Capacity (Ah, 25°C)	10HR (100.0A, 1.80V)	5HR (170.0A, 1.80V)	3HR (250A, 1.80V)	1HR(550A, 1.75V)
	1000	850	750	550
Dimensions (mm)	Length	Width	Height	Total Height
	316	160	420	442
Approx. Weight (kg)	58.8			
Reference Internal Resistance (mΩ)	0.16 ( fully charged @ 25°C)			
Maximum Discharge Current (A/5 Sec.)	6000			
Self-Discharge (25°C)	≤ 1.5% per month			
Charge Voltage (V/cell, 25°C)	Cycle use		Float use	
	2.35 (-3.5mV/°C/cell), max charge current: 200A		2.25 (-3.5mV/°C/cell)	
Short Circuit Current (A)	9000			

## Discharge Data

Constant Current Discharge Data (25°C, A)													
End Voltage (V/cell)	min				h								
	30	35	40	45	1	2	3	5	8	10	12	20	24
1.60	1052	970	882	804	616	388	290	193	135.6	111.6	93.6	59.0	48.8
1.65	1000	926	844	780	600	376	284	189	132.6	109.6	92.0	58.4	48.4
1.70	940	876	800	750	580	362	276	184	129.0	107.0	90.0	57.6	48.0
1.75	866	816	750	706	550	346	264	178	125.0	103.6	87.6	56.4	47.4
1.80	782	750	690	652	516	326	250	170	120.0	100.0	85.0	55.0	46.8

Constant Power Discharge Data (25°C, W/cell)													
End Voltage (V/cell)	min				h								
	30	35	40	45	1	2	3	5	8	10	12	20	24
1.60	1850	1714	1572	1456	1128	710	536	360	256	213.0	180.0	115.4	96.6
1.65	1780	1660	1528	1426	1108	698	530	356	252	211.0	178.0	114.8	96.2
1.70	1700	1600	1476	1390	1084	684	524	352	248	208.0	175.6	114.0	95.8
1.75	1590	1504	1390	1320	1040	662	508	346	244	204.0	173.6	112.6	95.4
1.80	1460	1396	1292	1240	992	634	490	336	238	199.4	170.0	110.8	94.8

## Performance Curve



### Sacred Sun Power Sources Co., Ltd.

No.1 Shengyang Road Qufu City, PRC  
sales@sacredsun.cn

### Sacred Sun Asia Pacific

No. 15, Yishun Industrial Street 1,  
#01-17, WIN5, Singapore 768091  
sales.asia@sacredsun.cn

### Sacred Sun Europe SPRL

Schoenstraat 96-9140 Temse, Belgium  
sales.eu@sacredsun.cn

### Sacred Sun MEA FZE

S10122A1019 Jebel Ali, Dubai,  
United Arab Emirates  
sales.mea@sacredsun.cn

